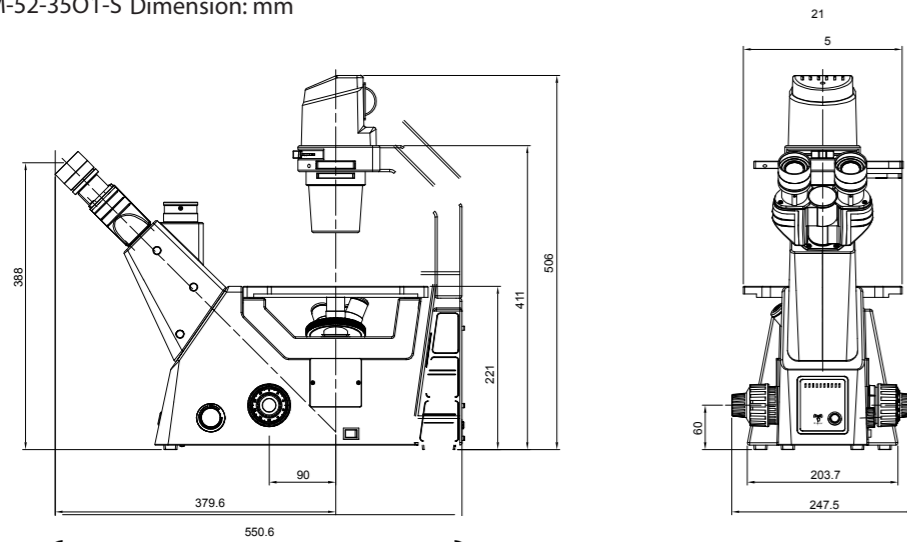


LM-52-3501-S Dimension: mm



Designs and specifications are subject to be change without prior Notice due to continues R & D

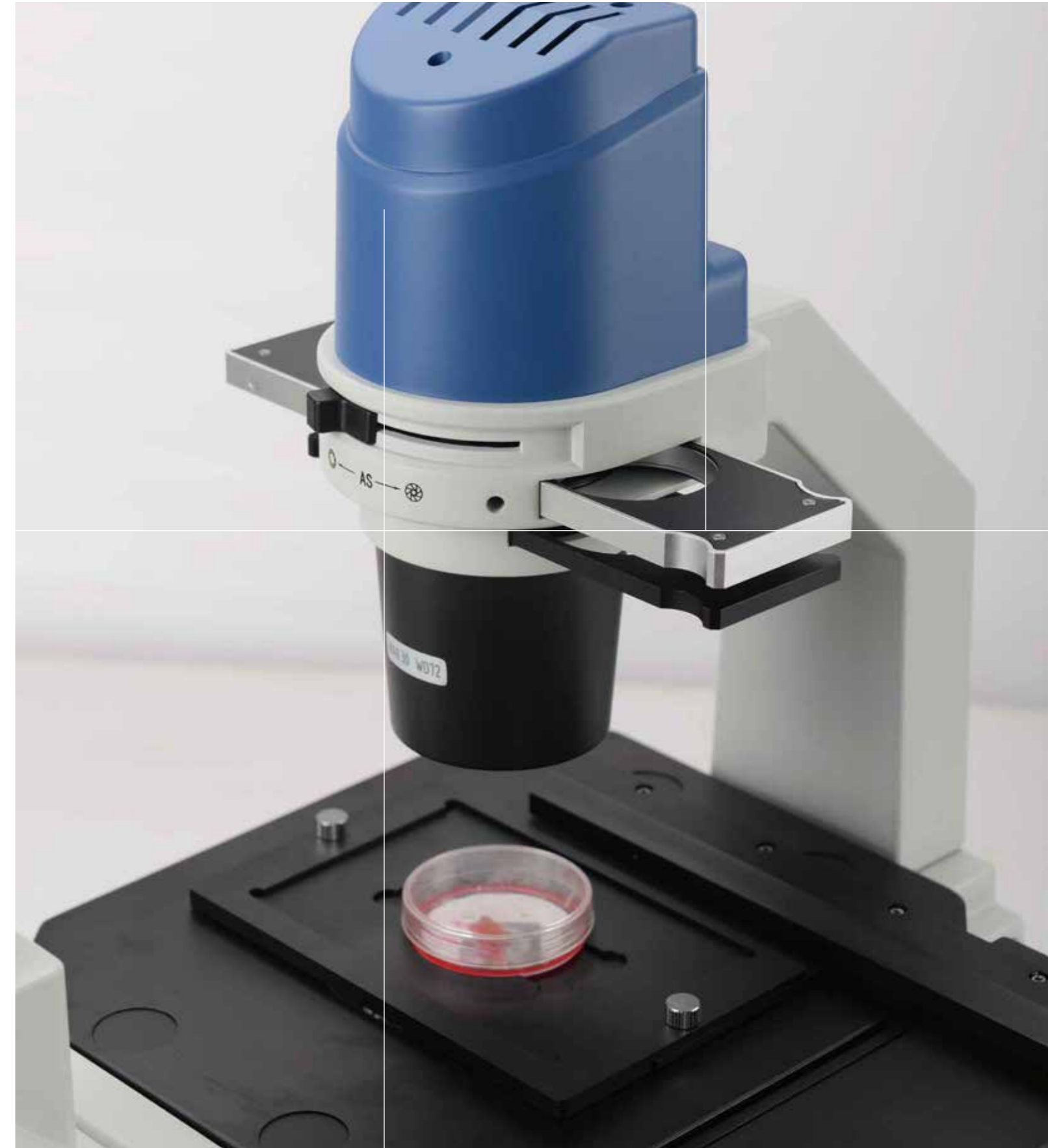
Enquiries: +91 9483511877

Registered Office : Lawrence & Mayo House, 274, Dr. D. N. Road, Mumbai-400001. Tel : 022 - 22071828 / 1824 / 6048 Fax : 022 - 2207 0048 Email : instmum@lynxinst.com			Visit : www.lynxinst.com			NAGPUR - 440012 Tel : 0712 - 2460058 Tel : 0712 - 2460068 nagpurinst@lynxinst.com
AHMEDABAD - 380 006 Tel : 079 - 26400284 / 2607 / 26402754 / 26466160 instahm@lynxinst.com	BANGALORE - 560 002 Tel : 080 - 2221 7900 / 22277901 Fax : 080 - 2224 4492 banstm@lynxinst.com	CHENNAI - 600 002 Tel : 044 - 45939900 Tel : 044 - 28412912 chenmtrd@lynxinst.com	COCHIN - 682 011 Tel : 0484 - 4058239 Tel : 0484 - 2368654 inst-coc@lynxinst.com	GOA - 403 001 Tel : 0832 - 2224343 Tel : 0832 - 2431414 goapanj@lawrenceandmayo.co.in	GUWAHATI - 781 005 Tel : 0861-2468994 / 95 instguw@lynxinst.com	
NEW DELHI - 110 001 Tel : 011 - 23356262 inst-del@lynxinst.com	PUNE - 411 005 T/F : 020 - 2553 5597 / 3566 puneinst@lynxinst.com	SECUNDERABAD - 500 009 Tel : 040 - 49119972 / 27895015 T/F : 040 - 27898056 insts@lynxinst.com	KOLKATA - 700 014 Tel : 033 - 40511800 Tel : 033 - 40511820/822 instkol@lynxinst.com	ODISHA - 751 001 Tel : 0674 - 2380885 inst-bbsr@lynxinst.com	VISAKHAPATNAM - 530 020 Tel : 0891 - 2505160 invz@lynxinst.com	

Dealer:

LM-52-3501-S

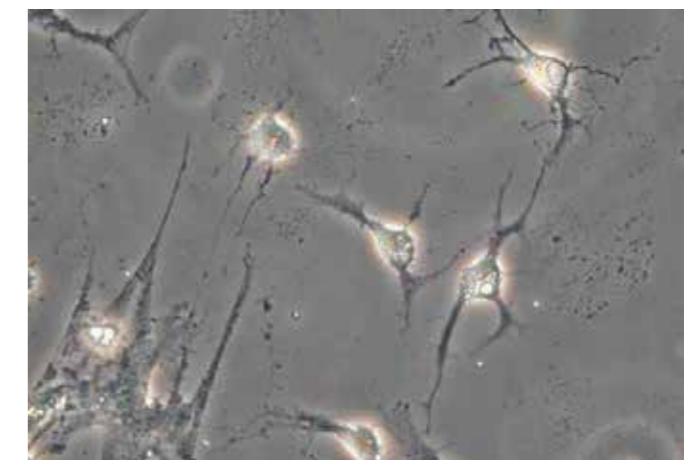
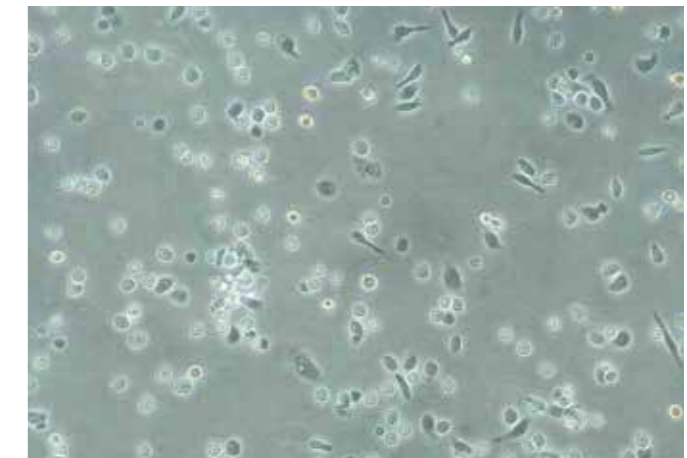
INVERTED BIOLOGICAL MICROSCOPE



Professional solution for cell tissue culture



- ⊗ With ergonomic designed frame and superior optical system, LM-52-3501-S is available for clear micro-image and easy operation.
- ⊗ Specially designed for cell tissue culture, LM-52-3501-S with high contrast and resolution, highlighting the outline and internal structure of cells meets the needs of basic laboratory research.
- ⊗ With the core concept of energy conservation and environmental protection, LM-52-3501-S is more intelligent and longer lifetime.



For your best work Lynx offers Smooth and comfortable operation, intelligent energy conservation system.



Ergonomic viewing head

360° rotatable viewing head with 50mm-75mm adjustable inter-pupillary distance, the eye-point can be raised 34mm directly by rotating the tube at 65mm IPD, more convenient and faster than traditional way.

Steady structure

High rigidity aluminum alloy with high-pressure die-casting technology, builds the steady frame of LM-52-3501-S. Powder spraying on surface, coating process on lenses, anti-corrosion and anti-wear, create beautiful look and smooth feel, ensures long working time even time even under hostile circumstance.

Safe and efficient LED illumination

Adopting Creative Resource and Energy Efficiency (CREE) 5W LED, energy-saving and long-lasting, the illumination is safe and stable.

Different attachments for various samples

Compact frame with 215mm X 250mm big stage is available to be attached with various sample holders, such as culture dish/bottle, multi-orifice plate, as well as mechanical stage for option.



Wide field plan eyepiece

Plan 10X eyepiece with 22mm field of view, wide and bright, is easy for target searching. High eye-point, effectively relieve the visual fatigue.

20X phase contrast objective for standard

Super long working distance plan achromatic objectives 4X/10X/40X together with 20X phase contrast objective for standard recommendation, provide clear and high contrast image.

Phase contrast kit

Dedicated phase contrast plate, working with phase contrast objectives, ensures the best contrast image of living cell or other undyed samples.



Complete Accessories for Diversified demands, cameras and imaging softwares for real and professional images



Intelligent ECO system

Based on the concept of energy conservation and environment protection, is designed with ECO system. The illumination power can be automatically on or off through infrared induction.

Practical "marking objective"

New designed "objective" with ink inside for marking the target, is very practical and effective to extract the target cell when to observe and culture the living cell.

A kit for smart phone connection

Specially designed kit which can be inserted into the eyepiece tube for combining a smart phone on a microscope, keep record on time by taking photo or video.



There are different kinds of cameras with high quality for digital microscope system, provide digital image with natural color technology by and software for image analysis is available.

LM-52-3501-S Specification

Optical System	Infinity color corrected optical system
Viewing Head	45° inclined trinocular head, 360° rotatable, inter-pupillary range: 50-75mm, fixed splitting ratio=5:5
Eyepiece	High eye-point wide field plan eyepiece PL10X/22mm, with adjustable diopter, micrometer attachable
	*High eye-point wide field plan eyepiece PL15X/16mm, with adjustable diopter
Objective	Infinity plan achromatic objectives 4X/10X/20X/40X/60X*
	*Infinity plan phase contrast objectives 4X/10X/20X/40X
	*Infinity plan fluorescence objectives 4X/10X/20X/40X/60X
Nosepiece	*Infinity plan phase contrast and fluorescence objectives 20X/40X
	* Quintuple nosepiece Quadruple nosepiece
Frame	Biological frame with coaxial focus system, coarse range: 9mm (6.5mm up and 2.5 down), fine precision: 0.002mm. With upper limit and tension adjustment. External wide voltage transformer, 100V-240V input and 12V5A output; 5W LED with light indicator, intensity adjustable With infrared induction.
Stage	215mm X 250mm fixed stage; mechanical stage attachable, moving range: 120mm X 80mm; extension plate; slide holder Petri dish holder; Teraseki holder; metal plate; glass plate.
Condenser	NA0.3 long working distance condenser, demountable.
Camera adapter	* 0.35X, 0.5X, 0.65X, 1X C-mount adapter
Others	* Color temperature change filter, green interference filter, infrared eliminate filter

* Optional Accessories